

Feelgood designs

Create a feelgood environment.



Catalogue Europe 2021

‘We create furniture that makes people feel good,
because we believe when people feel good, they work, relax and live better.’

An Australian company

Feelgood Designs was established in 2001 in Melbourne, Australia. With a focus on natural materials, innovative design and quality, our furniture helps to create warm, human-oriented ‘feelgood’ environments. Through collaborations with selected designers we endeavour to provide enduring furniture solutions that combine the best of traditional craftsmanship with modern day manufacturing and high quality materials.

What goes into making a piece of furniture feel good?

It's the carefully selected materials that feel good to touch and add warmth to a room.

It's the meticulous craftsmanship and attention to every detail that entices you to run your hand along a beautifully crafted surface.

It's the enduring quality of our designs that ensures they remain contemporary for decades to come.

Why we love rattan...

Ideal for use in furniture, rattan naturally embodies many of the properties high tech materials try to emulate. Its high strength and flexibility enables the formation of organic shapes that mould to the user's body. Rattan's excellent breathability and low thermal conductivity improve user comfort and help the body to maintain a constant temperature.

Our handwoven production process consumes minimal energy, provides employment to struggling communities and helps to keep this traditional craft alive.

Rattan is a biodegradable, renewable resource. When managed sustainably rattan leaves a small environmental footprint.

marta b.v. is the exclusive importer and agent for Feelgood Desgins in Europe since 2013, serving the professional market, with offices in Belgium and the Netherlands.

Rattan in general

Also known as ‘wicker’ rattan is a climbing palm with over 600 species that grows in tropical regions of Asia and Africa. Rattan is a rapidly renewable resource that is 100% biodegradable. Its fast, climbing growth habit and potential as a Non Timber Forest Product (NTFP) can encourage sustainable forest practices that protect existing vegetation. Rattan harvesting and associated industries providing employment and positive social welfare benefits to local communities. The material natural exhibits many of the qualities that are desirable for furniture manufacturing. It is thermally stable, strong and its flexibility allows it to be woven into organic shapes that mould to the user's body. Products made from rattan consume considerably less energy and emit less greenhouse gasses compared to similar products made with synthetic materials.



Rattan poles

A common term used to describe various species of larger diameter rattan. Sizes range from 8mm to 40mm in diameter. Pale blond in colour with uniform diameter and texture.

This material will develop a honey patina over time with exposure to light.

Suitable for indoor use only.



Rattan core (split rattan)

3mm round weaving material processed from the centre (core) of larger rattan poles. Pale blond in colour with uniform diameter and texture.

This material will develop a honey patina over time with exposure to light.

Suitable for indoor use only.



Ratan slimit / Rattan pulut

An unprocessed rattan species with hard outer skin. 3 to 4mm in diameter, the colour naturally varies from pale oak to tan.

With an outer protective skin this species is one of the most resilient weaving materials available.

Suitable for indoor use only.



Rattan peel

5mm in width, flat weaving material made from the outer skin of rattan poles. Pale blond in colour with uniform width.

This material will develop a honey patina over time with exposure to light.

Suitable for indoor use only.



Polyethylene core

3mm round synthetic rattan made from polyethylene (PE).

Although polyethylene contains UV stabilisers some fading will still occur with prolonged outdoor use.

Suitable for both indoor and outdoor use or applications with a high incidence of spills.

Polyethylene material can be recycled. Suitable for outdoor use.



Polyethylene peel

5mm flat half oval shaped synthetic peel made from polyethylene (PE).

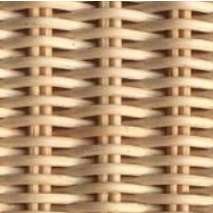
Although polyethylene contains UV stabilisers some fading will still occur with prolonged outdoor use.

Suitable for both indoor and outdoor use or applications with high incidence of spills.

Polyethylene material can be recycled. Suitable for outdoor use.

Material and colors indoor

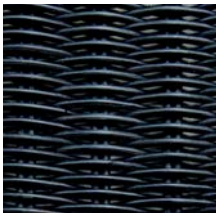
Rattan core (split rattan)



natural



charcoal



black

Rattan pulut

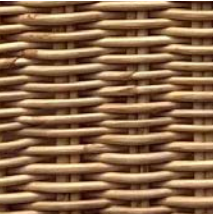


natural



dark grey

Rattan slimit



natural



graphite



rust

Rattan peel



natural



espresso

Rattan pole



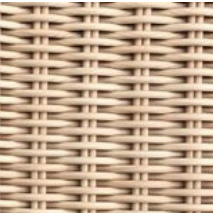
natural



black

Material and colors outdoor

Polyethylene core



wheat



black



charcoal

Polyethylene peel



espresso

Wood material and colors

Oak solid & veneer



natural



black

Maintenance & care of rattan

Maintenance

- Occasionally clean chairs with a soft lint free cloth or duster.
- Spills can be removed with a damp soft sponge or lint free cloth that has been soaked in warm water.
- Do not use excessive amounts of water and ensure rattan is dry before re-use.
- Do not use scourers or harsh detergents as these may damage the coatings.
- Check and replace plastic feet if necessary.

Care

- Do not stand on chairs.
- Do not place any heavy or sharp objects on chairs.
- Do not knock or rub chairs against walls, tables or surfaces that may damage the weaving.
- Do not place wet objects on chairs.
- Do not use rattan chairs outdoors or in damp, wet area's such as bathrooms.
- Stacking chairs should be stacked with care to avoid damage.

The Feelgood Designs collection 2021

New item 2021

Feelgood designs



Dimensions (mm): W470 x D530 x H790 (SH 455)

Materials: powder coated frame with rattan PU finished shell

Colours:

charcoal frame with natural rattan slimit
charcoal frame with graphite rattan slimit

Outdoor use: no

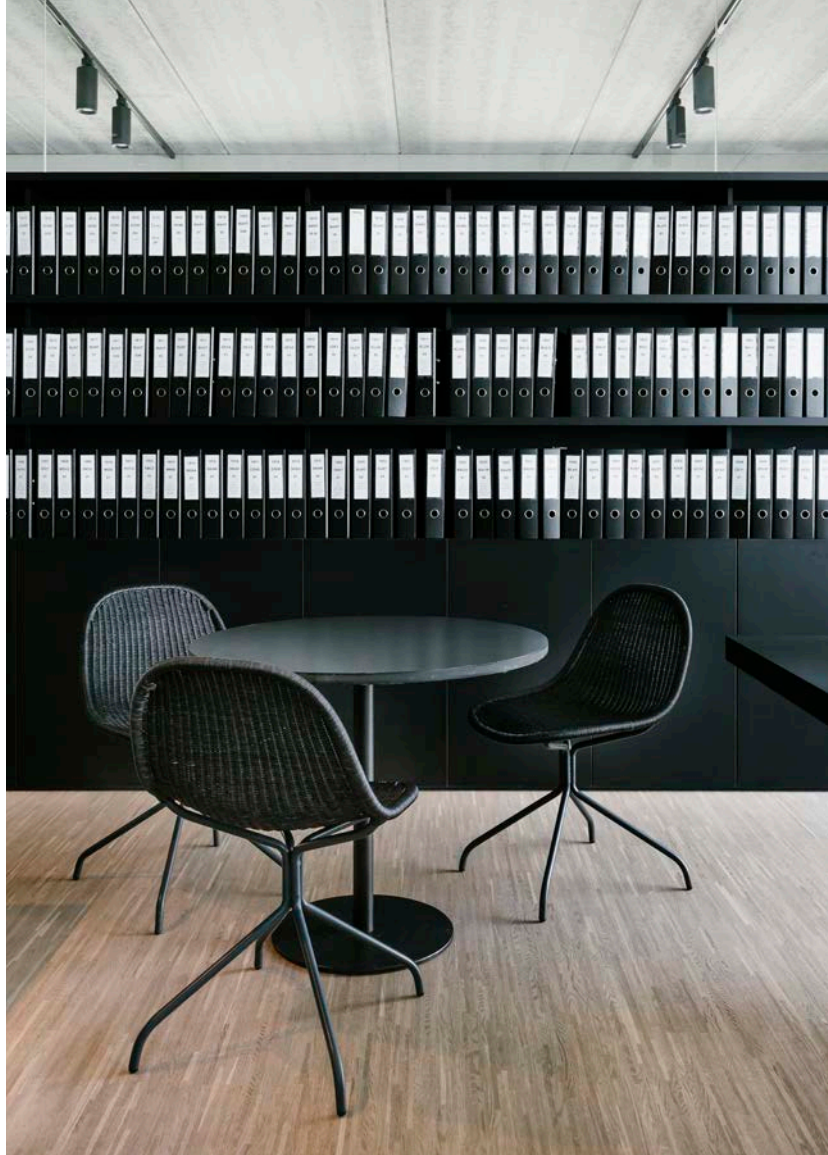
Stacking: yes



Ellie by Allan Nøddebo (2020)

Edwin chair charcoal frame/split rattan black shell

photography The Fresh Light



Feelgood designs

Dimensions (mm): W510 x D570 x H820 (SH 450)

Materials: powder coated frame with split rattan PU finished shell

Colours:
charcoal frame with split rattan natural
charcoal frame with split rattan black

Outdoor use: no

Stacking: no



Edwin chair by Allan Nøddebo (2019)

Basket chair white frame/pulut natural shell

photography by gafas.be | styling by sophiepillen.be

Feelgood designs



Dimensions (mm): W530 x D540 x H830 (SH440)

Materials: powder coated frame with pulut rattan PU finished shell or polyethylene shell

Colours:

black or white frame with rattan pulut natural
black frame with rattan pulut dark grey

black or white frame with polyethylene wheat (outdoor)
black frame with polyethylene black (outdoor)

Outdoor use: polyethylene version

Stacking: stackable up to 8 units



BASKET CHAIR by Gian Franco Legler (1951)

C603 chair black frame/split rattan natural shell

photography by PSGstudio.be



Feelgood designs

Dimensions (mm): W520 x D550 x H760 (SH 450)

Materials: powder coated frame with split or pulut rattan PU finished shell or polyethylene shell

Colours:

black frame with split rattan natural
black frame with split rattan charcoal
black or white frame with rattan pulut natural
black frame with rattan pulut dark grey (not pictured)

black or white frame with polyethylene wheat (outdoor)
black frame with polyethylene black (outdoor)

Outdoor use: polyethylene version

Stacking: stackable up to 4 units



C603 by Yuzuru Yamakawa (1958)

C603 stool black frame/split rattan charcoal shell

photography by fotostudio.be



Feelgood designs

Dimensions (mm): W520 x D480 x H940 (SH 660)
or W510 x D480 x H1000 (SH 750)

Materials: powder coated frame with split or pulut rattan PU finished shell or polyethylene shell

Colours:

black frame with split rattan natural
black frame with split rattan charcoal
black frame with rattan pulut natural
black frame with rattan pulut dark grey

black frame with polyethylene wheat (outdoor)
black frame with polyethylene black (outdoor)

Outdoor use: polyethylene version

Stacking: no



C603 STOOL by Yuzuru Yamakawa (1958)

C607 chair black frame/split rattan maroon shell

photography by PSGstudio.be

Feelgood designs



Dimensions (mm): W520 x D535 x H805 (SH 440)

Materials: powder coated frame with split rattan PU finished shell

Colours:

black frame with split rattan natural
black frame with split rattan charcoal
black frame with split rattan maroon

Stacking: stackable up to 6 units



C607 by Yuzuru Yamakawa (1964)

C607 stool black frame/split rattan natural shell

photography by fotostudio.be

Feelgood designs



Dimensions (mm): W510 x D460 x H880 (SH 660) or
W510 x D460 x H970 (SH 750)

Materials: powder coated frame with split rattan PU finished shell

Colours:

black frame with split rattan natural
black frame with split rattan charcoal

Stacking: no



C607 STOOL by Yuzuru Yamakawa (1964)

Reef chair black frame/espresso rattan peel shell

photography by PSGstudio.be



Feelgood designs

Dimensions (mm): W580 x D512 x H765 (SH 440)

Materials: powder coated frame with rattan peel PU finished shell or polyethylene shell

Colours:

black frame with rattan peel natural
black frame with rattan peel espresso

black frame with polyethylene espresso (outdoor)

Outdoor use: polyethylene version

Stacking: yes



REEF by Jakob Berg

Kaki chair and low stool charcoal frame/slimit rattan natural shell
photography by marta



Dimensions (mm): W590 x D530 x H770 (SH 450)

Materials: powder coated frame with rattan slimit PU finished shell or polyethylene shell

Colours:
charcoal frame with rattan slimit natural
charcoal frame with rattan slimit graphite
charcoal frame with rattan slimit rust*
charcoal frame with polyethylene wheat (outdoor)
charcoal frame with polyethylene charcoal (outdoor)
*on request

Outdoor use: polyethylene version

Stacking: stackable up to 4 units



KAKI CHAIR by Jamie McLellan (2018)

Kaki armchair charcoal frame/slimit rattan natural shell

photography restaurant Le Sahuc • Rivière-sur-Tarn (F)



Dimensions (mm): W640 x D540 x H770 (SH 450)

Materials: powder coated frame with rattan slimit PU finished shell or polyethylene shell

Colours:

charcoal frame with rattan slimit natural
charcoal frame with rattan slimit graphite
charcoal frame with rattan slimit rust*
charcoal frame with polyethylene wheat (outdoor)
charcoal frame with polyethylene charcoal (outdoor)
*on request

Outdoor use: polyethylene version

Stacking: stackable up to 4 units



KAKI ARMCHAIR by Jamie McLellan (2018)

Feelgood designs

Kaki stool charcoal frame/slimit rattan natural shell
@connors_and_co & @francoisebaudet

Feelgood designs



Dimensions (mm): W590 x D500 x H850 (SH 640)

Materials: powder coated frame with rattan slimit PU finished shell or polyethylene shell

Colours:
charcoal frame with rattan slimit natural
charcoal frame with rattan slimit graphite
charcoal frame with rattan slimit rust*
charcoal frame with polyethylene wheat* (outdoor)
charcoal frame with polyethylene charcoal* (outdoor)
*on request

Outdoor use: olyethylene version

Stacking: no



KAKI STOOL WITH BACKREST by Jamie McLellan (2018)

Kaki low stool charcoal frame/slimit rattan natural shell
photography The Fresh Light



Feelgood designs



Dimensions (mm): W490 x D400 x H450 (SH 450)

Materials: powder coated frame with rattan slimit PU finished shell or polyethylene shell

Colours:
charcoal frame with rattan slimit natural
charcoal frame with rattan slimit graphite
charcoal frame with rattan slimit rust*
charcoal frame with polyethylene wheat (outdoor)
charcoal frame with polyethylene charcoal (outdoor)
*on request

Outdoor use: polyethylene version

Stacking: stackable up to 2 units



KAKI LOW STOOL by Jamie McLellan (2018)

Kaki lounge chair & low stool charcoal frame/PE wheat shell (outdoor) & seat cushion
photography by marta



Feelgood designs

Dimensions (mm): W670 x D640 x H170 (SH 400)

Materials: powder coated frame with rattan slimit PU finished shell or polyethylene shell

Colours:
charcoal frame with rattan slimit natural
charcoal frame with rattan slimit graphite
charcoal frame with rattan slimit rust*
charcoal frame with polyethylene wheat (outdoor)
charcoal frame with polyethylene charcoal (outdoor)
*on request

Outdoor use: polyethylene version

Stacking: stackable up to 4 units



KAKI LOUNGE CHAIR by Jamie McLellan (2018)

C317 lounge chair black frame/split rattan charcoal shell

photography by The Fresh Light



Feelgood designs

Dimensions (mm): W825 x D760 x H760 (SH 405)

Materials: powder coated frame with split rattan PU finished shell or polyethylene shell

Colours:

black or white frame with split rattan natural
black frame with split rattan charcoal

black or white frame with polyethylene wheat (outdoor)
black frame with polyethylene black (outdoor)

Outdoor use: polyethylene version



C317 by Yuzuru Yamakawa (1965)



Dimensions (mm): W750 x D750 x H920;
ottoman: W640 x D570 x H530 (SH 380)

Materials: rattan pole PU finished

Colours: natural or black

Outdoor use: no



C110 HIGHBACK by Yuzuru Yamakawa (1964)

CL320 Easy Chair black rattan pole
photography by gafas.be | styling by sophiepillen.be

Feelgood designs



Dimensions (mm): W850 x D760 x H710 (SH360)

Materials: rattan pole PU finished

Colours: natural or black

Outdoor use: no



CL320 EASY CHAIR by Yuzuru Yamakawa

Snug natural rattan slimit
photography by gafas.be | styling by sophiepillen.be



Feelgood designs

Dimensions (mm): W1040 x D890 x H850 (SH 315)

Materials: steel frame with slimit rattan PU finished shell

Colours: slimit rattan natural or dark grey

Outdoor use: no



SNUG by Dennis Abalos (2011)

Manta lounge chair black polyethylene/dark grey seat

photography by gafas.be | styling sophiepillen.be



Feelgood designs

Dimensions (mm): W980 x D890 x H835 (SH 380)

Materials: steel frame with split rattan PU finished shell or polyethylene shell and upholstered seat

Colours:

split rattan natural with beige seat
split rattan charcoal with black seat

black polyethylene with dark grey seat (outdoor)

Outdoor use: polyethylene version



MANTA by Henrik Pedersen (2011)

Tornaux lounge & footstool black frame/rattan peel natural
photography by PSGstudio.be



Dimensions (mm):

Lounge chair: W860 x D900 x H1004 (SH 360)

Footstool: W600 x D470 x H410 (SH 360)

Materials: powder coated frame with rattan peel PU finished shell or polyethylene shell

Colours:

black frame with rattan peel natural
black frame with rattan peel espresso

black frame with polyethylene espresso outdoor

Outdoor use: polyethylene version



TORNAUX & FOOTSTOOL by Henrik Pedersen (2011)

Feelgood designs

Clara bench, Kakī armchair & Kakī chair charcoal frame/slimit rattan natural shell
photography by The Fresh Light



Dimensions (mm): W1330 x D640 x H800 (SH 450)

Materials: powder coated frame with rattan slimit PU finished shell

Colours:
charcoal frame with rattan slimit natural
charcoal frame with rattan slimit graphite

Outdoor use: no

Stacking: no



CLARA by Allan Nøddebo (2018)

Chameleon chair natural & Trestle table black top, black legs
photography by The Fresh Light



Feelgood designs

- Dimensions (mm):** W552 x D520 x H800 (SH450)
- Materials:** american oak frame with laminated american oak veneer seat and back, 2 pack waterbased finish
- Colours:** natural or black
- Outdoor use:** no
- Stacking:** no



CHAMELEON CHAIR by Allan Nøddebo (2019)

Peggy chair black & Trestle table black top/black feet
photography by fotostudio.be



Feelgood designs

Dimensions (mm): W460 x D506 x H793 (SH 450)

Materials: american oak frame with laminated american oak veneer seat and back, 2 pack waterbased finish

Colours: natural or black

Outdoor use: no



PEGGY CHAIR by Isabel Ahm (2015)

Valby chair black oak & Trestle table black top, black legs
photography by The Fresh Light & Different we are

Feelgood designs



Dimensions (mm): W541 x D536 x H789 (SH 450)

Materials: american oak frame with laminated american oak veneer seat and back, 2 pack waterbased finish

Colours: natural or black

Outdoor use: no



VALBY CHAIR by Allan Nøddebo (2015)

Inge table natural & Chameleon chairs natural

photography by marta



Dimensions (mm): diameter 1200 x H750 (base diameter 470)

Materials: American oak veneer with two pack water based finish

Colours: natural or black

Outdoor use: no

Stacking: no

Feelgood designs



INGE TABLE by Allan Nøddebo (2019)

Trestle Table black top/natural feet & C603 chairs black frame/split rattan natural shell

photography by gafas.be | styling by sophiepillen.be



Dimensions (mm):

D1800 x W900 x H730

D2100 x W950 x H730

D2400 x W1000 x H730

Materials: american oak frame and american oak veneer top (reinforced with steel), 2 pack waterbased finish

Colours: top and legs natural or black

Outdoor use: no



TRESTLE TABLE by Allan Nøddebo (2012)

Feelgood designs

Urban loom chair natural
Tahini Melbourne (Australia) by Zwei Projects
photography by Michael Kai



Dimensions (mm): W497 x D530 x H750 (SH 450)

Materials: unfinished teak frame with loom woven PU finished seat

Colours: natural or charcoal

Outdoor use: no

Stacking: no



URBAN LOOM CHAIR by Jakob Berg (2005)

Urban chairs at Urban table large
photography by PSGstudio.be



- Dimensions (mm):** W497 x D530 x H750 (SH450)
- Materials:** teak unfinished
- Colours:** natural (unfinished)
- Outdoor use:** yes
- Stacking:** stackable up to 4 units

Feelgood designs



URBAN CHAIR by Jakob Berg (2005)

Two Urban tables XSmall & Basket chair white frame/PE wheat shell
photography by marta;



Dimensions (mm):

XS: W695 x D695 x H740
S: W1400 x D800 x H740
M: W1800 x D900 x H740
L: W2100 x D900 x H470
XL: under construction

Materials: teak unfinished

Colours: natural (unfinished)

Outdoor use: yes

Stacking: table comes flat pack



URBAN TABLE by Jakob Berg (2005)

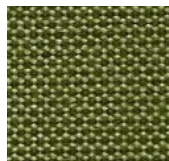
SEAT CUSHIONS

tailor made indoor and outdoor seat cushions for Basket chair • C603 chair & stool •
C607 chair & stool • C317 lounge • Kaki chair & armchair, stool & lounge • Clara bench • Edwin

OUTDOOR

Sunbrella® textiles are water-repellent and resistant to fading and degradation from sunlight.
with quick dry filling • bottom anti-slip and zipper • washable

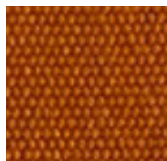
Solids



Lichen



Blush



Tuscany

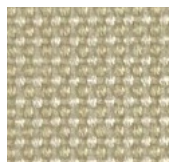


Adriatic



Lime

Naté



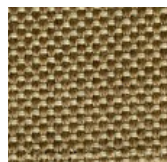
Nature



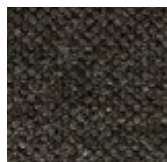
Grey chiné



Linen chalk



Heather beige



Sooty

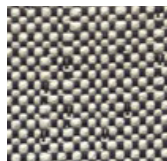
Savane



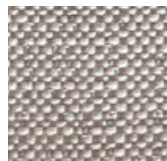
Canvas



Storm



Granit

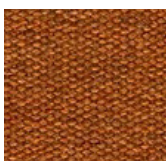


Silver

Heritage (50% recycled)



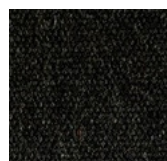
Ash



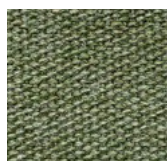
Pumpkin



Denim



Char

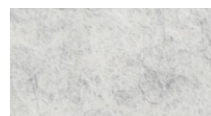


Leaf

INDOOR

100% wool felt

two layers with filling • bottom standard anthracite anti-slip • top do be chosen



06 marble



51 powder



18 dark blue



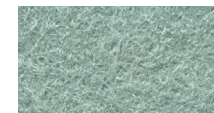
20 mango



07 light grey mixture



29 walnut



50 aqua



11 red



01 anthracite



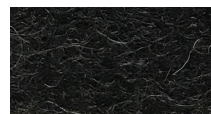
66 iron



39 deep water



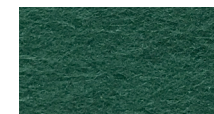
70 spice



08 graphite



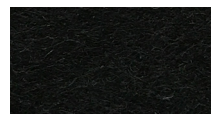
96 mustard



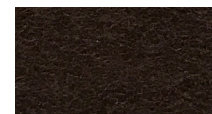
49 jade



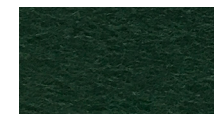
26 aubergine



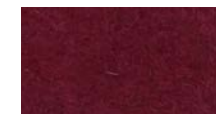
02 black



27 chocolate



44 fir green



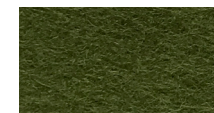
21 burgundy



35 taupe



12 indigo



24 olive



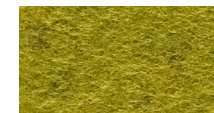
48 pistachio



38 caramel



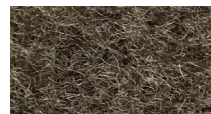
34 petrol



71 moss



23 curry



47 pepper



10 blue



30 may green



marta;

marta b.v. - import & agency
contact: info@martaonline.eu
www.martaonline.eu
+32 475 294 023 or +31 6 430 30 426